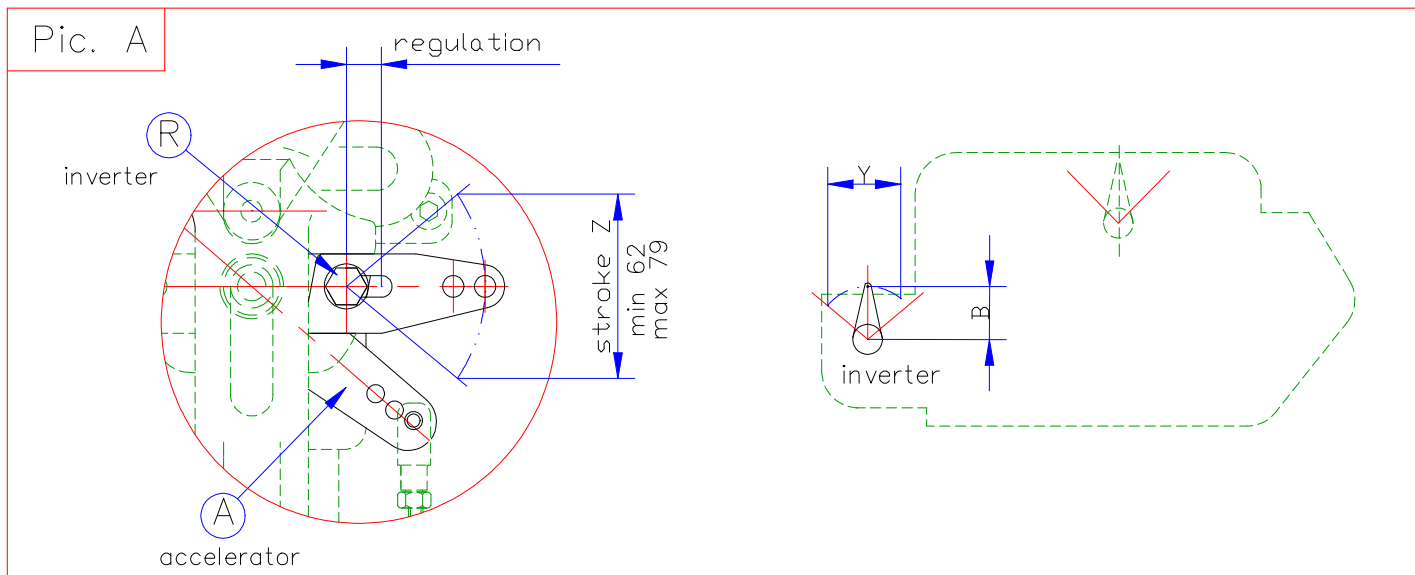




CABLE MOUNTING INSTRUCTION TO SINGLE LEVER TYPE 3000

1) INVERTER REGULATION

Before the mounting of the cable, you have to control that the inverter stroke of the engine (Y) is equal to the lever R stroke (Z). If they are different, you have to regulate the fixing of the lever R directly on the lever box. The kind of lever fixing allows a regulation of the stroke between 62 and 79 mm. In the case of this regulation isn't enough, you have to regulate the inverter engine lever by changing the arm B (reference to pic. A).



2) ACCELERATOR REGULATION

First, fix the cable to the box lever with the clamp, on the holes at the bottom of the box (use the lower holes usually - D). After, you have to check that there is not interference between the external hole E of the accelerator lever, that is in position of minimum stroke (the lever is in the position of minimum acceleration), and the fork's hole. The clevis's hole must be the lower than the lever's holes. If this condition isn't true, move the clevis with the screw in order to lowering it. You obtain the best mounting if the distance between the clamp and the fork's hole is < 165 mm.

3)

Done this regulation, join the cable to the lever box using the clamps and inserting the pivot in to the clevis in the holes on the lever s A ed R (reference to pic. A).

4)

Try the box lever moving the lever. The moving must be fluid. If it isn't so, check each point of this instruction and check the condition of the strokes. Retry the moving.

