

# COMMAND LEVER 3000 with TROLLING VALVE CONTROL

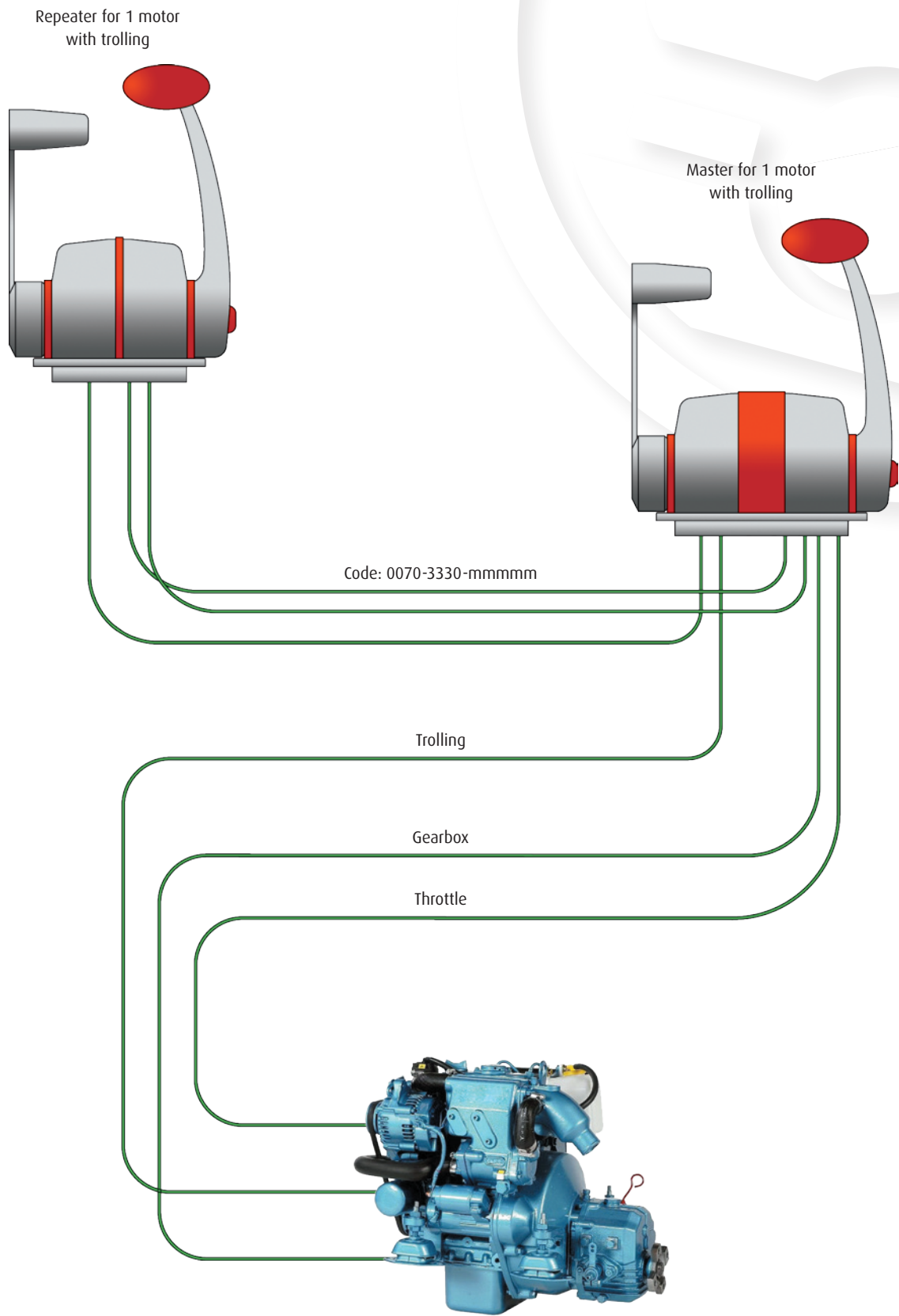
Command lever for the control of throttle, gearbox and trolling valve; the system can be configured for more command stations. It is very indicated for fishing on professional and pleasure boats as well.



## PRODUCT RANGE

| DESCRIPTION                                                     | CODE       |
|-----------------------------------------------------------------|------------|
| • Single lever chrome plated for 1 motor + trolling; red handle | 30090.1-CR |
| • Single lever black for 1 motor + trolling; red handle         | 30090.1-SR |
| • Master chrome plated for 1 motor + trolling; red handle       | 3390.1-CR  |
| • Master black for 1 motor + trolling; red handle               | 3390.1-SR  |
| • Repeater chrome plated for 1 motor + trolling; red handle     | 3090.1-CR  |
| • Repeater black for 1 motor + trolling; red handle             | 3090.1-SR  |

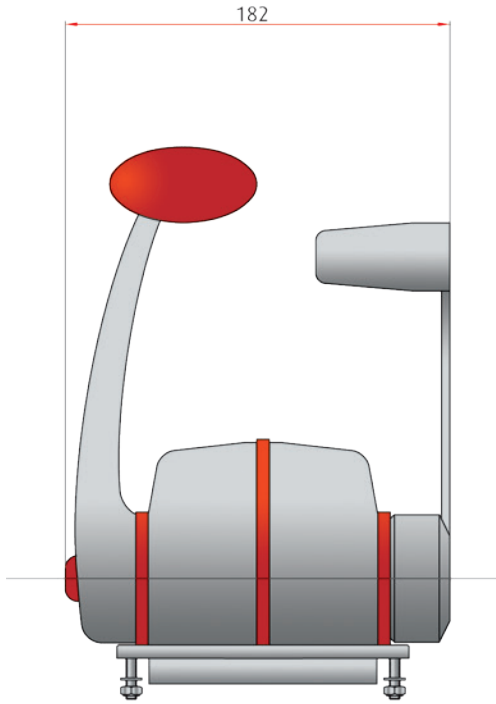
## INSTALLATION SCHEME FOR 2 COMMAND STATIONS



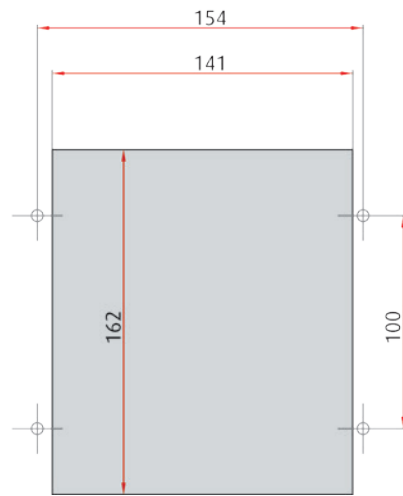
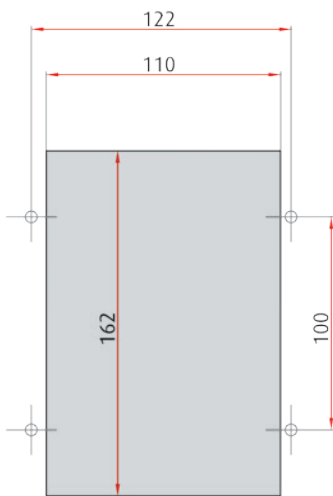
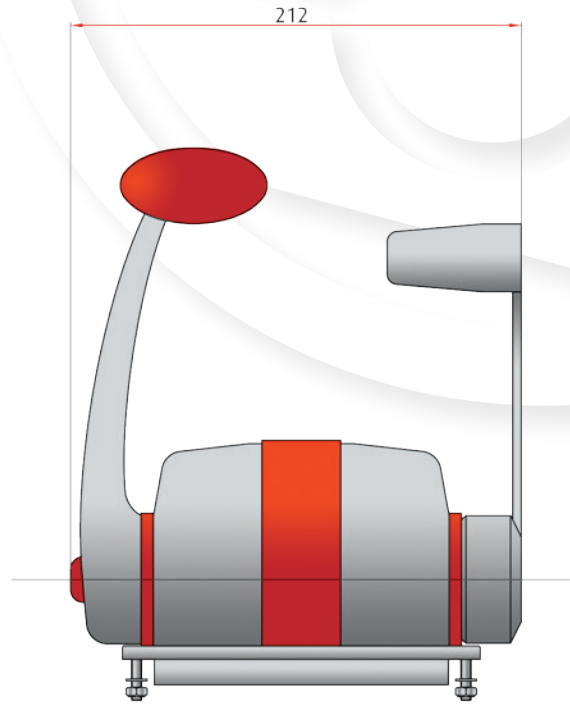
Note:  
mmmmmm is the length in mm

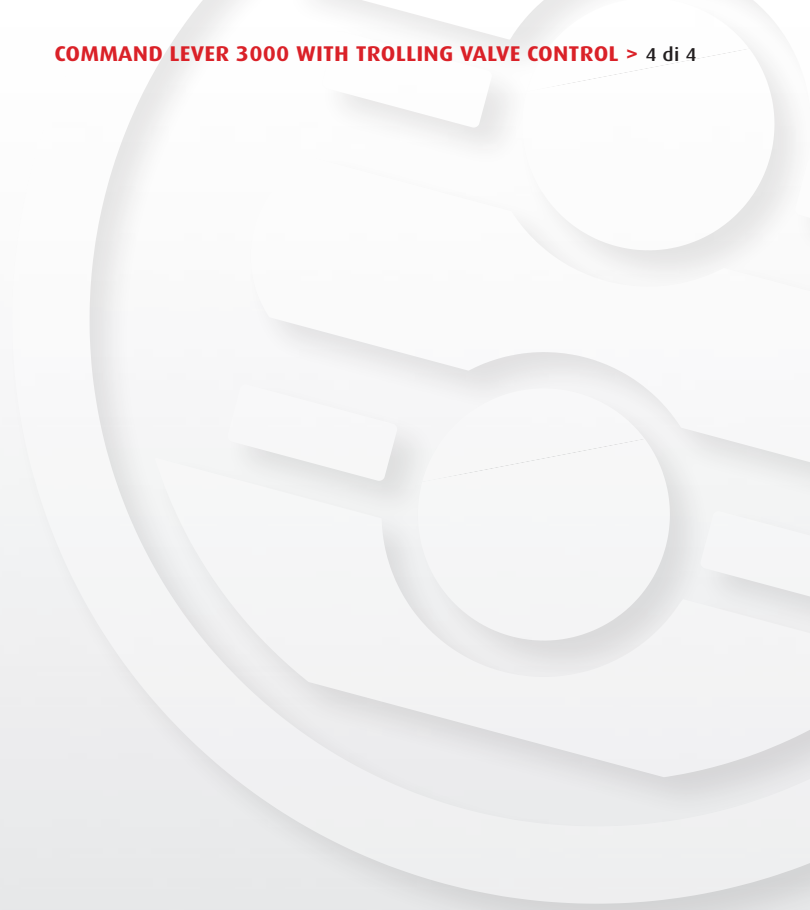
## DIMENSIONS, FOOTPRINTS AND DRILLING MASKS

Repeater single lever  
+ troling for 1 motor



Master single lever  
+ troling for 1 motor





**Flexball Italiana S.r.l.**

Via San Luigi 13/A - 10043 Orbassano (To) - Italy

Tel 0039.011 90.38.900 - Fax 0039.011 90.38.747  
info@flexballitaliana.com

[www.flexballitaliana.com](http://www.flexballitaliana.com)

