

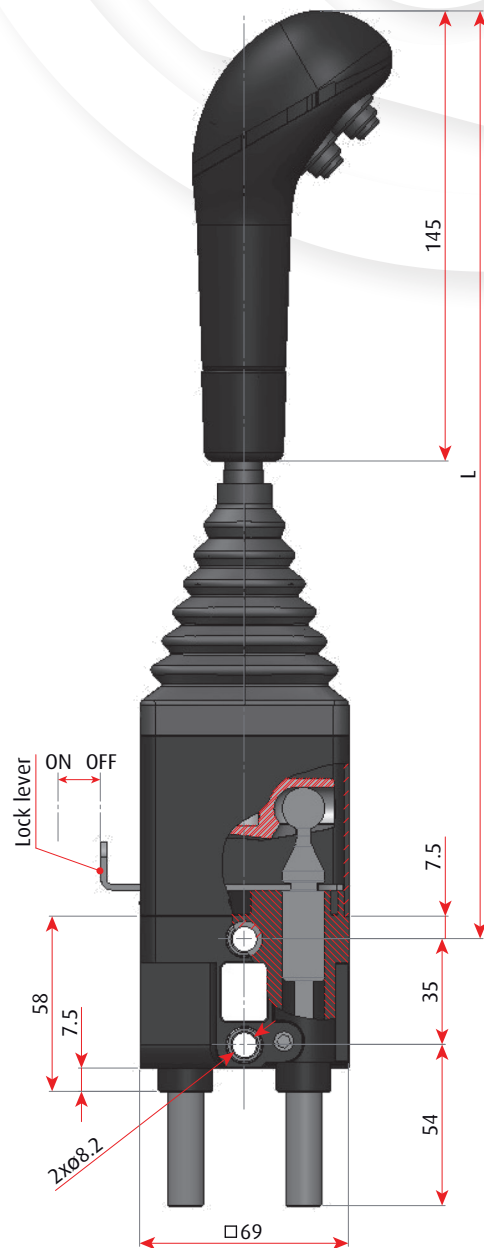
# 2800

## Mechanical joystick

▼ This series of economic joysticks is suitable for agricultural application such as front loaders

Thanks to its modular construction, it can be configured for any application's requirements like, for example, clockwise

or counter clockwise with respect to cable movements. It is available with maximum 3 push buttons.



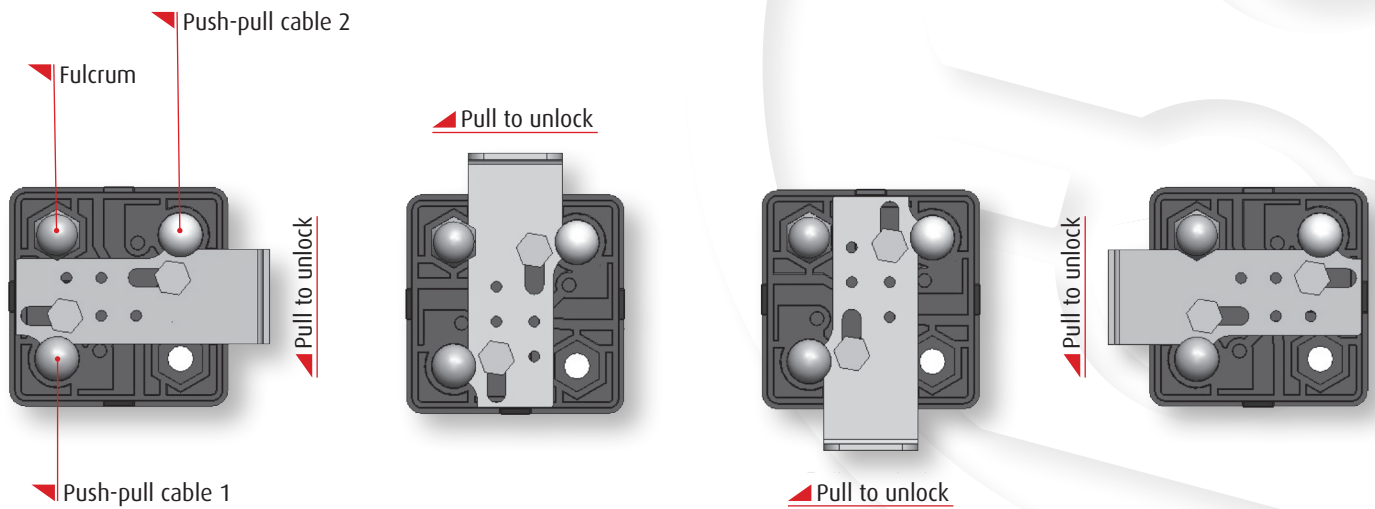
### SPECIFICATION

- Lever length: either 295 or 345 mm
- Cable stroke:  $\pm 16$  mm
- Lever ratio (depending on lever's length): either 6:1 or 7.5:1
- Lever stroke measured on the knob (depending on lever's length): either 200 mm (46°) or 250 mm (46°)



## LOCK LEVER POSITION

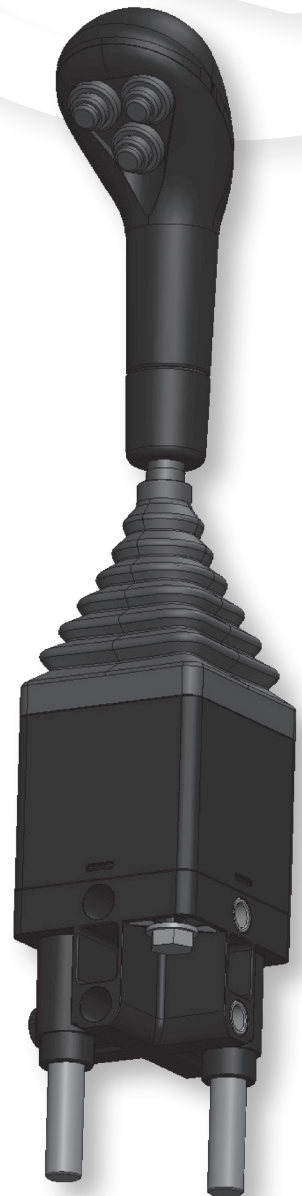
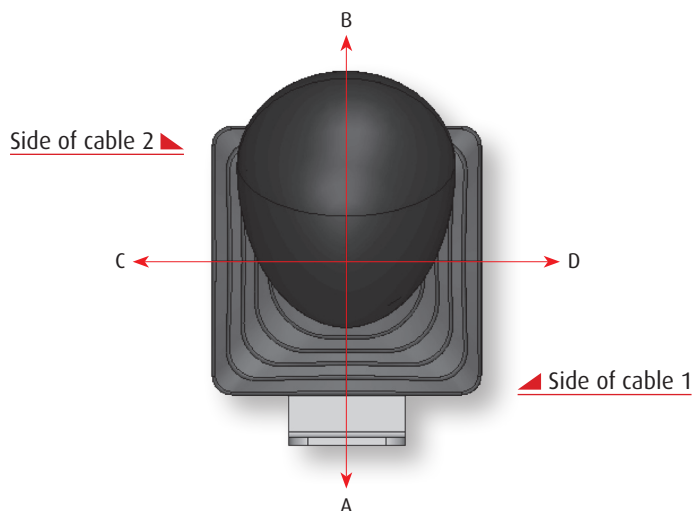
It is possible to mount the lock lever on each of the 4 sides of the base of the joystick 2800. Depending on the fulcrum position are defined two different correlations between the movements of the lever and the movements of the push-pull cable: clockwise or counter clockwise.



## PUSH PULL CABLES MOVEMENTS WITH RESPECT TO LEVER'S DIRECTION

The following table describes the direction of the cables with respect to the movement of the lever.

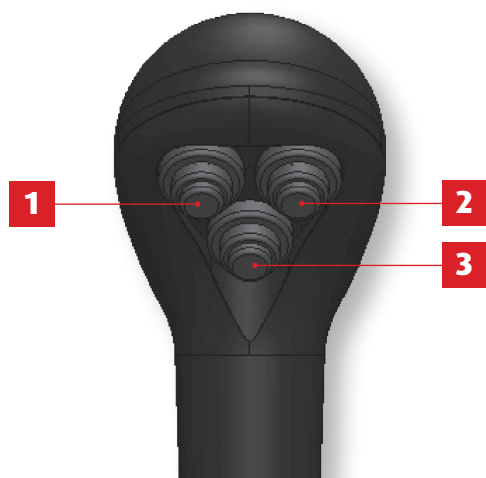
Lever's direction	Cable 1 direction	Cable 2 direction	Rotation
A	Push	-	Clockwise
B	Pull	-	
C	-	Push	
D	-	Pull	
A	-	Pull	Counter clockwise
B	-	Push	
C	Pull	-	
D	Push	-	



Joystick 2800 is delivered from the factory with the lock lever in closed position (like in the first above scheme). For different position of the lock lever, please contact your dealer or the factory.

## HANDLE AND PUSH BUTTONS

The handle of joystick 2800 can be without or with up to 3 push buttons. Each switch can commutate a maximum current of 5 amps DC. In case of push buttons, the joystick is provided with a 4 poles electrical cable of a standard length of one meter.



Electrical wiring

Push button	Wiring color
1	Black
2	Grey
3	Brown
Common wire	Blue

## CODES

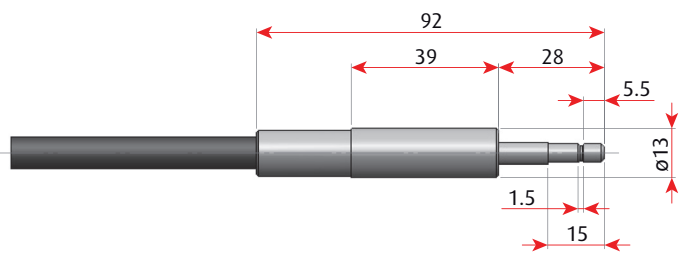
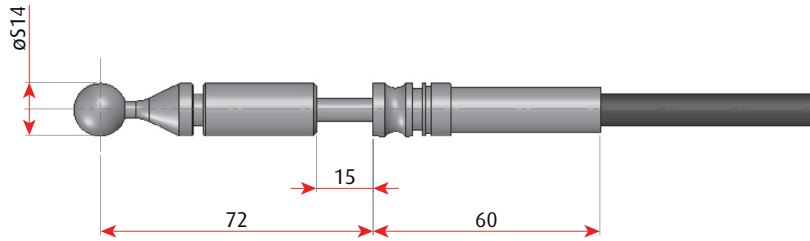
Lever length	Rotation	Number of push buttons	Code
295	Clockwise	Joystick without handle	1036-50-01
		0	1036-50-01-00R
		1	1036-50-01-01R
		2	1036-50-01-02R
		3	1036-50-01-03R
	Counter clockwise	Joystick without handle	1036-50-11
		0	1036-50-11-00R
		1	1036-50-11-01R
		2	1036-50-11-02R
		3	1036-50-11-03R
345	Clockwise	Joystick without handle	1036-50-02
		0	1036-50-02-00R
		1	1036-50-02-01R
		2	1036-50-02-02R
		3	1036-50-02-03R
	Counter clockwise	Joystick without handle	1036-50-12
		0	1036-50-12-00R
		1	1036-50-12-01R
		2	1036-50-12-02R
		3	1036-50-12-03R



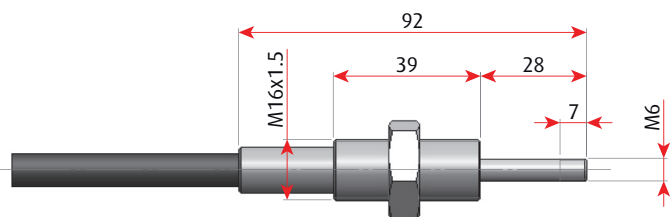
## PUSH-PULL CABLES WHICH FIT WITH JOYSTICK 2800

- The end fittings are represented with the cable at mid stroke position

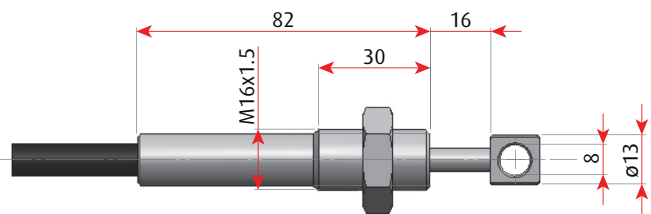
LEVER SIDE



▲ Cable type E3, code 0035730-mmmmm



Cable type E3, code 00341100-mmmmm  
Cable type 07E, code 00741100\*mmmmmm  
▲ Cable type 017, code 01041100-mmmmm



▲ Cable type 017, code 0175940-mmmmm

HYDRAULIC DISTRIBUTOR SIDE

## Flexball Italiana S.r.l.

Via San Luigi 13/A - 10043 Orbassano (To) - Italy

Tel 0039.011 90.38.900 - Fax 0039.011 90.38.747

info@flexballitaliana.com

www.flexballitaliana.com

# FLEXBALL

# ITALIANA

WR CONTROLS GROUP

