

1220

Mechanical throttle pedal

Throttle pedals 1220, aluminium made for floor mounting applications, are intended for medium and heavy-duty trucks, construction equipment, farm equipment and buses. It can be used in conjunction with any hand throttle lever. The moving mechanism can be mounted below the floor and can rotate, horizontally for any angle within 360° and vertically for 30°, to optimize throttle cable routing.

Pedal 1220

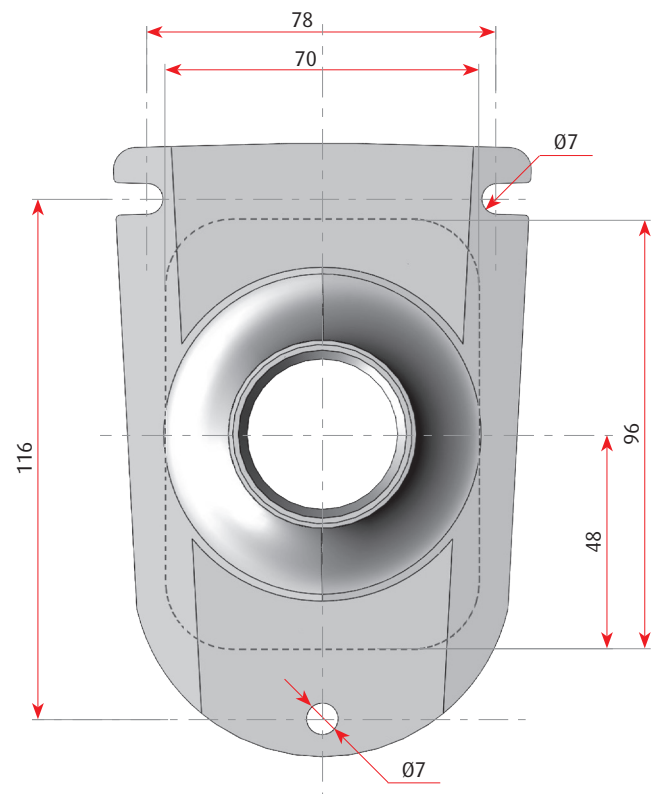
Includes connection to hand throttle control.



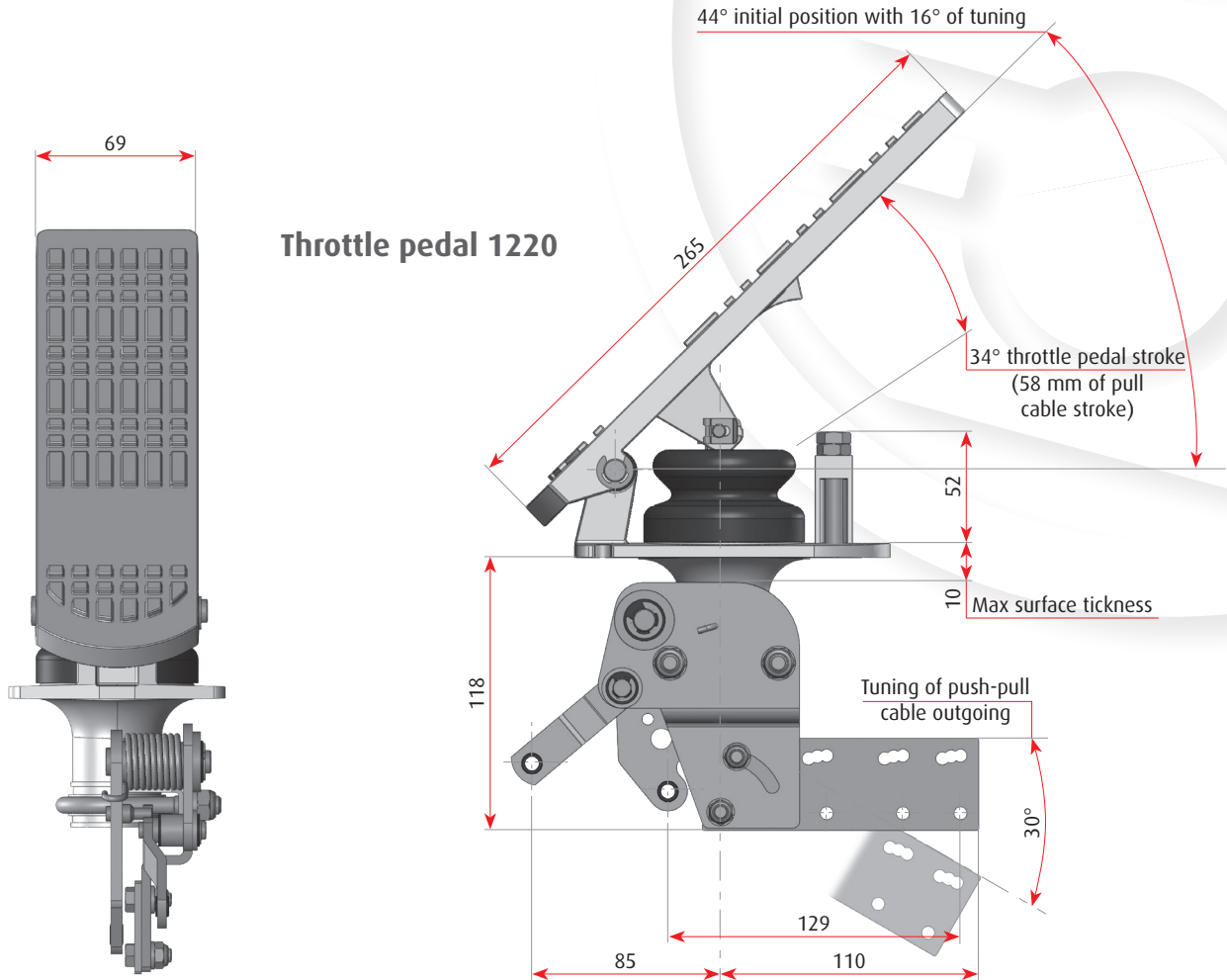
CODE	
• 1220	Version with connection to the hand throttle control

MECHANICAL SPECIFICATION	
• Operational life (at 25 °C)	5 million cycles
• Operating temperature	-40 .. +85 °C
• Storing temperature	-40 .. +110 °C
• Weight	1.50 kg
• Travel angle (standard)	34 degrees

Foot Print



**PHYSICAL DIMENSIONS
AND MOUNTING HOLES**



Flexball Italiana S.r.l.

Via San Luigi 13/A - 10043 Orbassano (To) - Italy

Tel 0039.011 90.38.900 - Fax 0039.011 90.38.747

info@flexballitaliana.com

www.flexballitaliana.com

FLEXBALL
ITALIANA

WR CONTROLS GROUP

