

# 1240

## Electronic throttle pedal

### ▼ General purpose throttle pedal

This series of pedals is mainly intended for tractors and agricultural equipment but, due to its versatile mounting features, it can be mounted on several kind of vehicles. A double concentric torsion spring is incorporated for idle position return.

Made in Nylon 6.1 plus GF, pedal 1240 is very robust and reliable. It is easy to customize and has a high mounting flexibility:

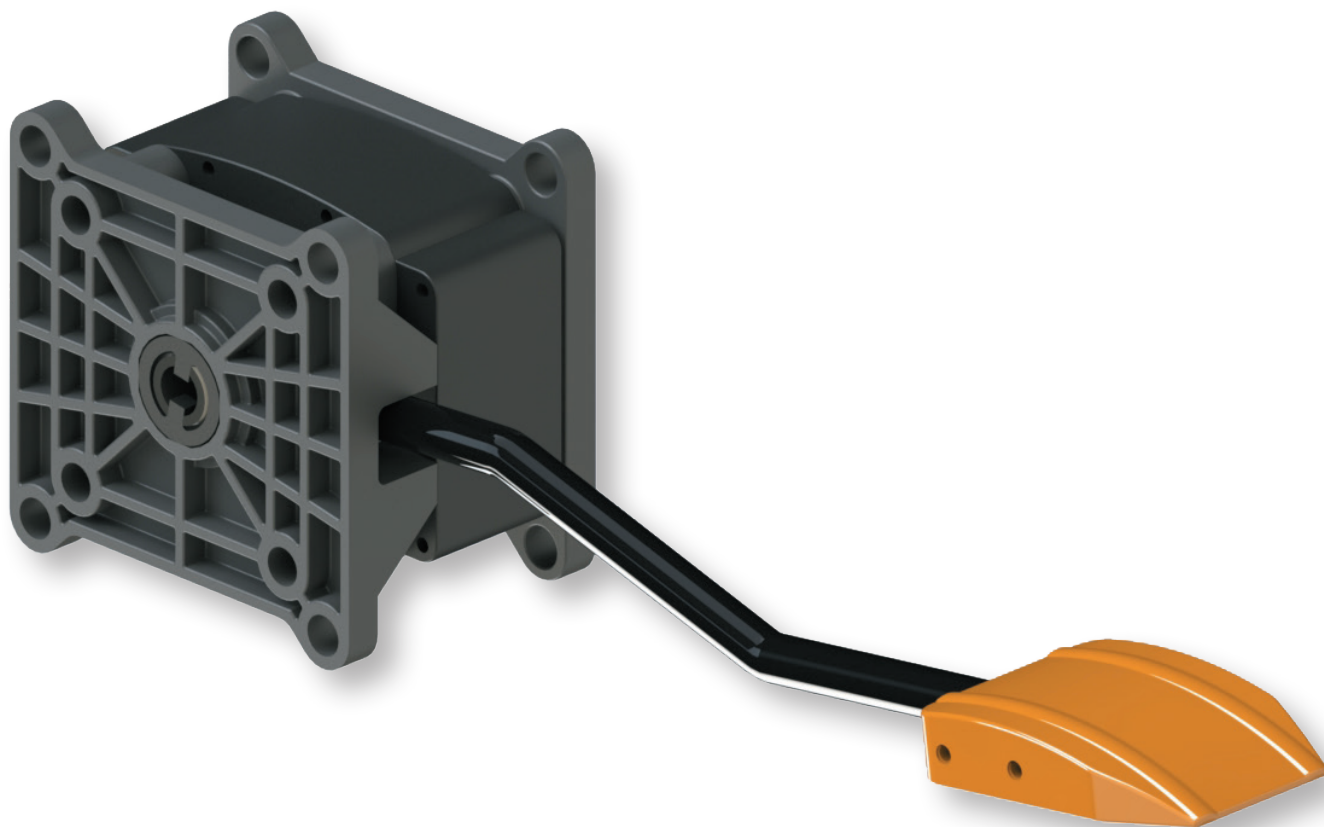
- Floor mounting
- Wall mounting
- Side mounting
- Under floor mounting

All "built in design" includes springs and electronic card. It is available with different IP protection degrees (from 00 to 69K). In line with automotive throttle pedal design, sensors are fully integrated into the housing.

Redundant system for "extreme" uses (e.g.: 4 channels output for mining applications).

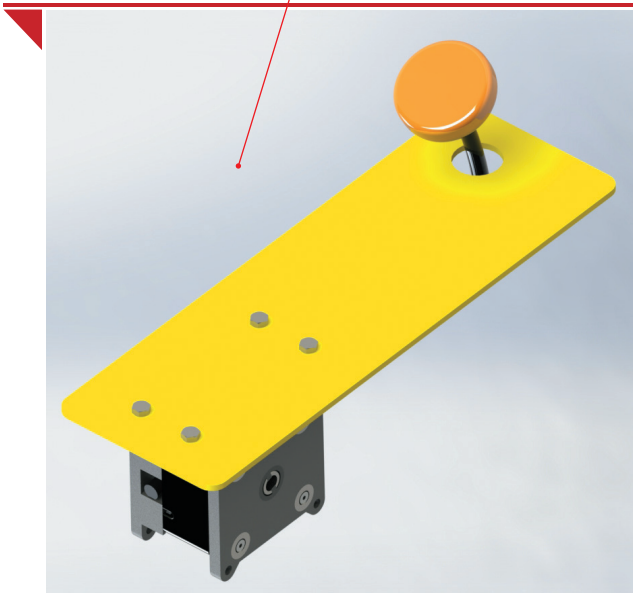
Measuring position is through Hall effect sensor and up to 4 channels can be provided. It is available with any kind of electrical interface: voltage with or without idle validation switch, PWM, current, CANBus.

Upon request, pedal 1240 can be configured with the desired electrical cable length, number of poles, type of connector.

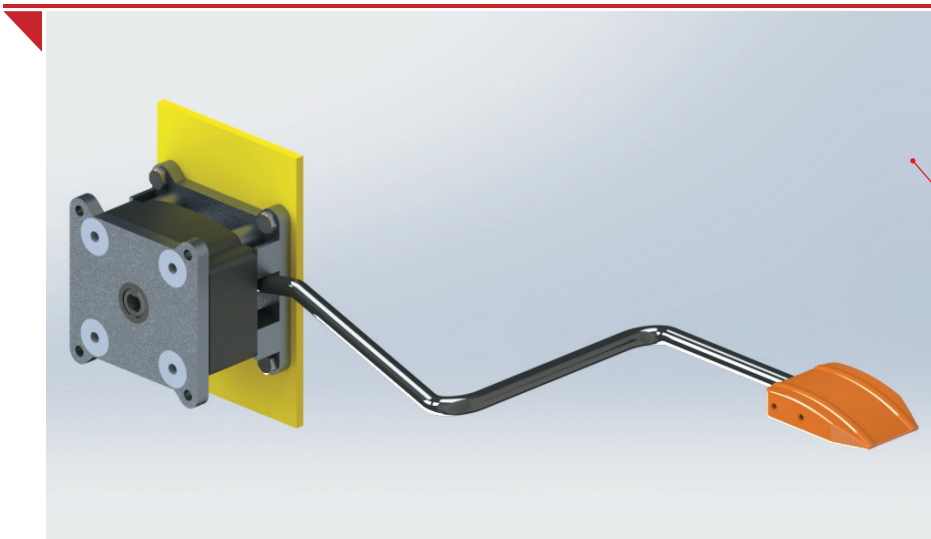
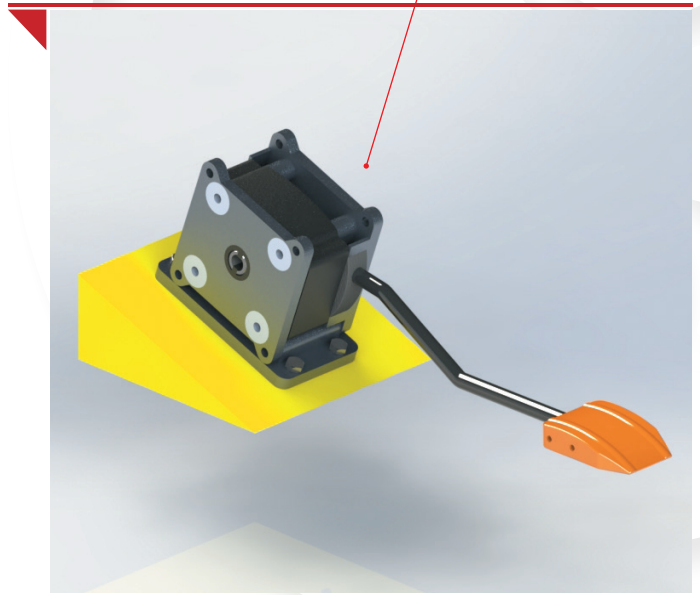


## INSTALLATION EXAMPLES

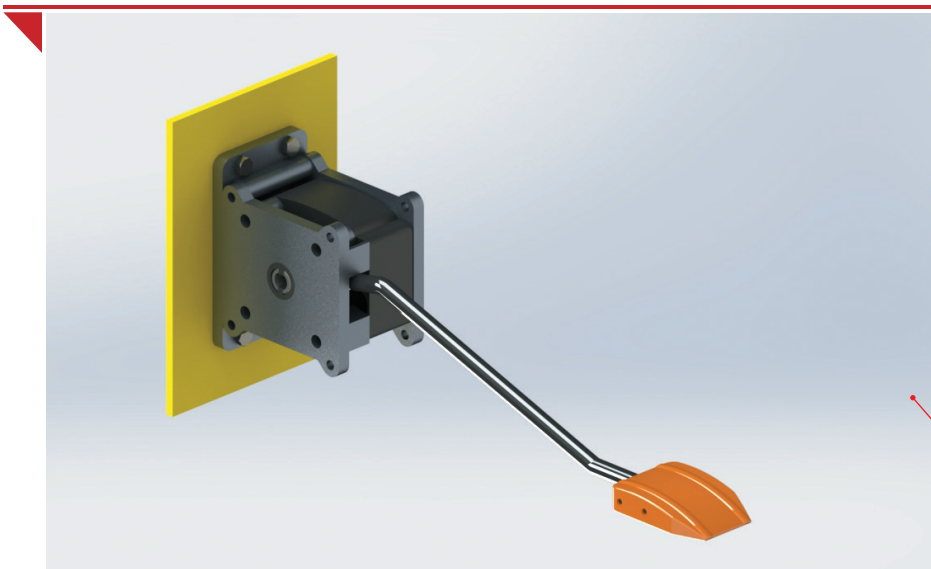
Under floor mounting



Floor mounting



Side mounting

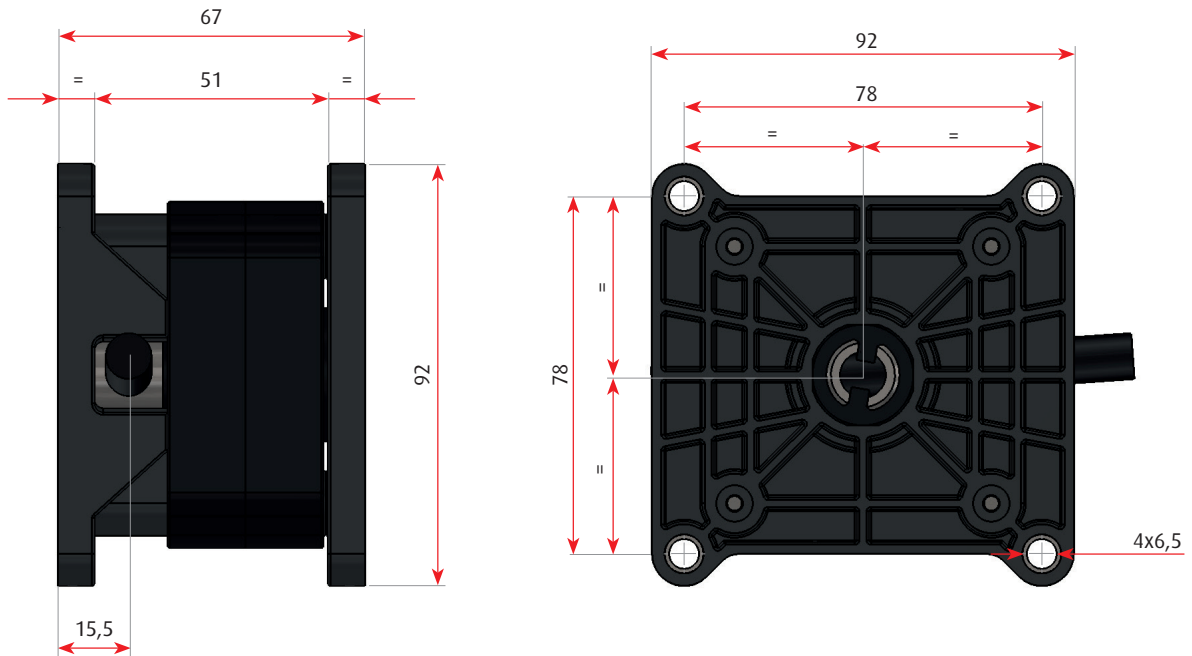


Wall mounting



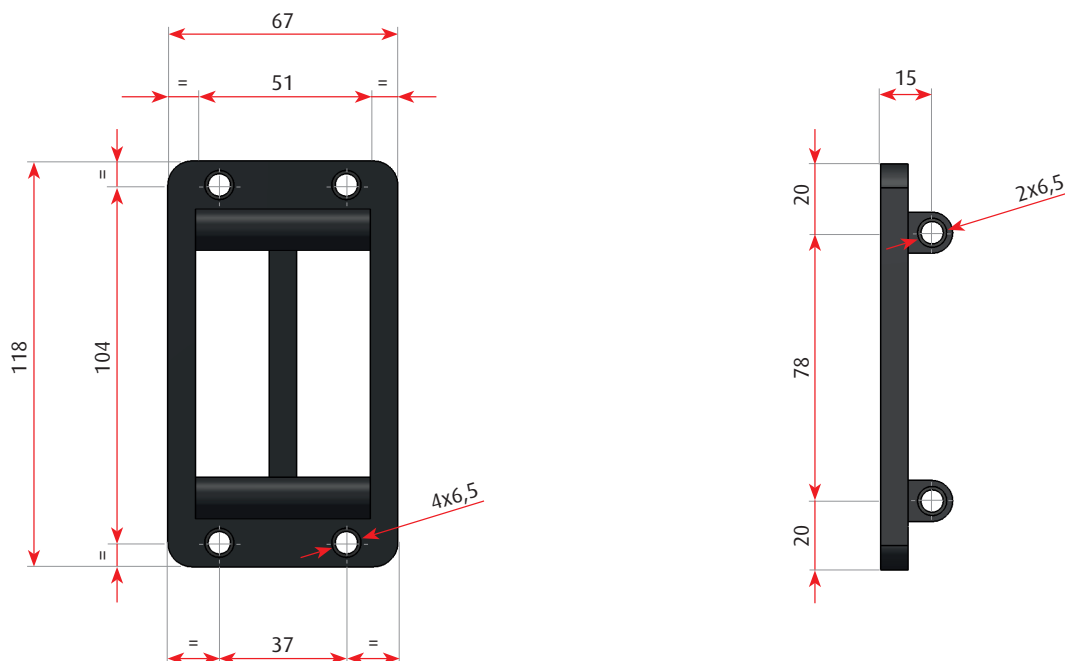
## PHYSICAL DIMENSIONS AND MOUNTING INSTRUCTIONS

### PEDAL DIMENSION



### FIXING BRACKET

The fixing bracket is necessary in case of wall mounting, floor mounting and under the floor mounting. It is not necessary in case of side mounting.



## LIST CODE OF MOST COMMON ELECTRONIC PEDALS AND LEVERS

MECHANICAL SPECIFICATION	
• Operational life (at 25 °C)	10 million cycles
• Operating temperature	-40 .. +80 °C
• Storing temperature	-40 .. +110 °C
• Weight (without arm)	0.80 kg
• Return spring	Double safety spring
• Hysteresis	0.15% on read value
• Travel angle	22 degrees

ELECTRICAL SPECIFICATION (VERSION WITH VOLTAGE SIGNALS)	
• Sensor	Hall effect
• Power supply	5 Vdc ±10% ratio metric
• Electrical signal	Galvanically insulated
• Resolution and update rate	10 bit, update rate 0,1 ms
• Correlation in case of 2 signals	Better than 1% in the whole pedal range
• Current consumption	<10 mA (per each channel)
• Minimum load resistance	4.7 kΩ
• Maximum load capacitance	10 nF

### APPLICATION EXAMPLE:

#### PEDAL 1240 WITH 2 VOLTAGE OUTPUT

Here below are reported typical standard configurations of foot pedals with 1 channel, 2 channels voltage output and 1 channel voltage + 1 Idle Validation Switch. Electrical cable standard length is 0,5 meter but any other length can be defined when ordering. Factory standard connector is AMP Superseal 6 poles but any other connector can be defined when ordering.

INTERFACE CONFIGURATION	CODE	SIGNAL OUTPUT
• 1 channel	1240.01.00	CH1 = voltage signal
• 2 channels	1240.02.00	CH1 = voltage signal; CH2 = voltage signal
• 1 channel + 1 idle validation switch	1240.03.00	CH1 = voltage signal; CH2 = IVS

For a complete overview of Pedal 1240 configured with other types of signal, please refer to ECU interfaces section.

#### Flexball Italiana S.r.l.

Via San Luigi 13/A - 10043 Orbassano (To) - Italy

Tel 0039.011 90.38.900 - Fax 0039.011 90.38.747

info@flexballitaliana.com

www.flexballitaliana.com

**FLEXBALL**  
ITALIANA  
WR CONTROLS GROUP

