

Handles



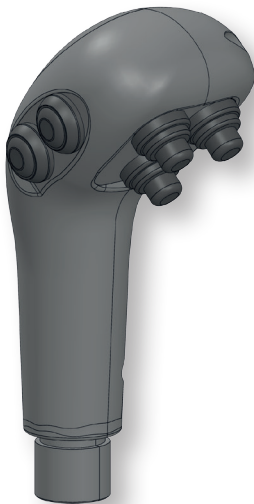
1705



1710



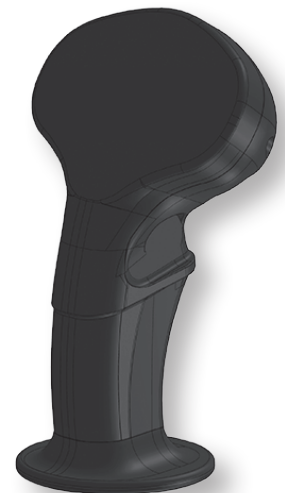
1715



1720



1725



1730



TYPE OF HANDLE

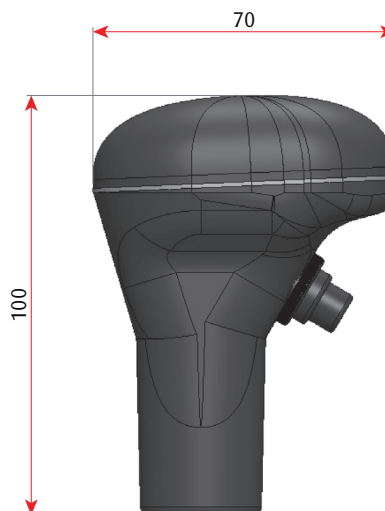
1705 – STANDARD KNOB

IT CAN BE MOUNTED ON:

- Lever E95
- Lever 1068
- Joystick 2000
- Joystick 2500



1710 – ANATOMIC HANDLE



SPECIFICATION:

- Protection degree: IP65
- Max current/voltage rating with resistive load: 2A at 250 V_{ac} or 4A at 125 V_{ac}
- Electrical life: 10,000 cycles at full load

IT CAN BE MOUNTED ON:

- Lever 1068
- Joystick 2000
- Joystick 2500
- Joystick 2800
- Joystick 2900



1715 – REAR**Features**

- Material: PA6+20% GF
- Marking available on the top

IT CAN BE MOUNTED ON:

- Joystick 2000
- Joystick 2500
- Joystick 2800
- Joystick 2900

**1720 – REAR****Features**

- Material: PA6+20% GF, black
- Marking available on the top
- Available also in grey (code 1721)

IT CAN BE MOUNTED ON:

- Joystick 2000
- Joystick 2500
- Joystick 2800
- Joystick 2900



1725 – ERGONOMIC

Features

- Material: PA6+20% GF
- Protection: IP50 or IP67

IT CAN BE MOUNTED ON:

- Joystick 2000
- Joystick 2500
- Joystick 2800
- Joystick 2900
- Electronic joystick 700



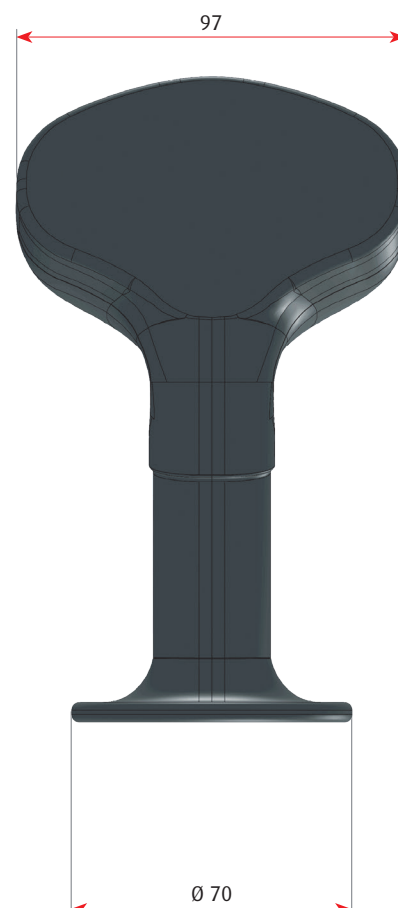
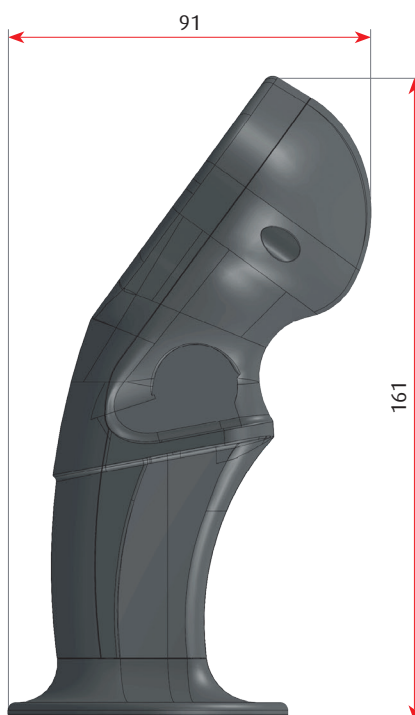
1730 – ERGONOMIC XL

Features






- Material: PA6+20% GF
- Protection: IP50 or IP67

IT CAN BE MOUNTED ON:

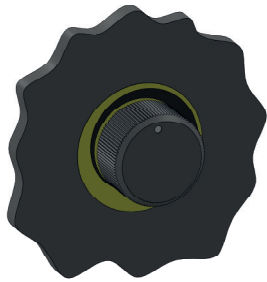




- Joystick 2000
- Joystick 2500
- Joystick 2800
- Joystick 2900
- Electronic joystick 700



SWITCHES AND OTHER COMPONENTS

PUSH BUTTON	A	MOMENTARY PUSH-BUTTON, LOW CURRENT ROUND HEAD Protection: IP67 Rating current: 400 mA Voltage: 30 VDC	
	B	MOMENTARY PUSH-BUTTON, LOW CURRENT FLAT HEAD Protection: IP67 Rating current: 400 mA Voltage: 30 VDC	
	C	MOMENTARY PUSH-BUTTON, LOW CURRENT ROUND HEAD WITH LED Protection: IP67 Rating current: 400 mA Voltage: 30 VDC green (available also in blue)	
	D	LATCHING PUSH-BUTTON, LOW CURRENT ROUND HEAD Protection: IP67 Rating current: 400 mA Voltage: 30 VDC	
	E	MOMENTARY PUSH-BUTTON, HIGH CURRENT Protection: IP67 Rating current: 4 A Voltage: 30 VDC	

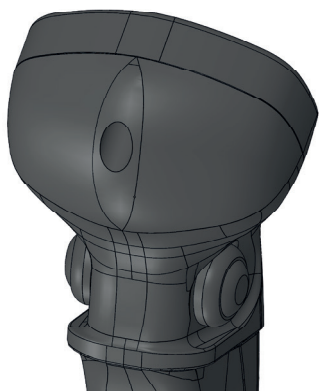


POTENTIOMETER	F	<p>POTENTIOMER</p> <p>Ceramic potentiometer for industrial and professional use</p> <p>Protection: IP67</p> <p>Mechanical travel: 300°</p> <p>Ohmic value: 1 kΩ, linear</p> <p>Operating temp: -40°C; +125°C</p> <p>The label can be customized</p>	
ROLLER SWITCH	G	<p>ROLLER (proportional voltage)</p> <p>Hall effect slide sensor</p> <p>Output signal: voltage (0-5V)</p> <p>Protection: IP67 with silicon boot</p> <p>Mechanical travel: $\pm 25^\circ$, with spring return to centre</p> <p>Operating temp: -40°C; +85°C</p>	
ROLLER SWITCH	H	<p>ROLLER (proportional PWM)</p> <p>Hall effect slide sensor</p> <p>Output signal: PWM (max 2 A)</p> <p>Protection: IP67 with silicon boot</p> <p>Mechanical travel: $\pm 25^\circ$, with spring return to centre</p> <p>Operating temp: -40°C; +85°C</p>	
MINI-JOYSTICK	I	<p>MINI-JOYSTICK 4-WAY MOMENTARY SWITCHES</p> <p>Protection: IP68</p> <p>Rating current: 1 A</p> <p>Voltage: 28 VDC</p> <p>Mechanical travel: $\pm 18^\circ$, with spring return to centre</p> <p>Operating temp: -40°C; +85°C</p>	
TOGGLE SWITCH	L	<p>TOGGLE SWITCH LEVER</p> <p>Toggle bistable switch ON-OFF with rubber boot</p> <p>Protection: IP68</p> <p>Rating current: 15 A</p> <p>Voltage: 28 VDC</p> <p>Operating temp: -40°C; +85°C</p>	



DEAD MAN FUNCTION

A - 2 push buttons (type A) are mounted in the rear side, both on left and right side



Code: D=1

B - 1 push button (type A) is mounted in the rear side centrally



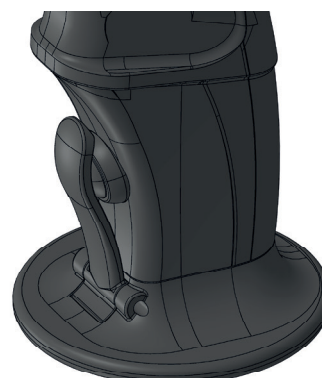
Code: D=2

C - 1 push button (type B) is mounted in the rear side centrally



Code: D=3

D - Trigger actuator



Code: D=4

E - Capacitive sensor implemented into the handle
Code: D=5



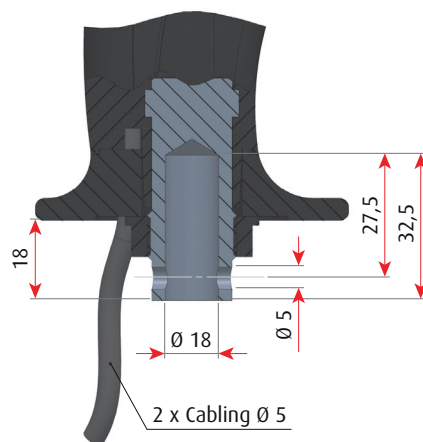
CONNECTION TO STICK

Joystick connection (2800 and 2900)



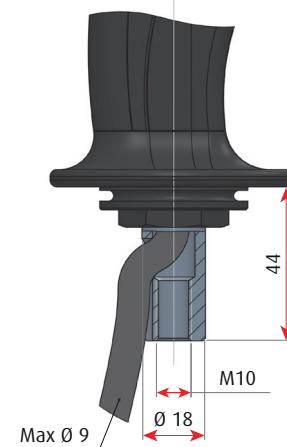
Code: C=1

Connection with hole Ø12 and pin



Code: C=2

Connection with hole M10



Code: C=3



DEVICES COMBINATION

SWITCHES AND OTHER COMPONENTS		HANDLE					
		1705	1710	1715	1720	1725	1730
Push button	A			X	X	X	X
	B			X	X	X	X
	C					X	X
	D			X	X	X	X
	E		X	X	X	X	X
Potentiometer F						X	X
Roller G						X	X
Roller H							X
Mini-joystick I				X		X	X
Toggle switch L				X	X	X	X
Dead Man	A					X	X
	B					X	X
	C					X	X
	D					X	X
	E					X	X

Combination and position of the different devices on the same handle must be evaluated case per case.



HANDLE TYPE					DEAD MAN	HIGH CURRENT PUSH BUTTON	LOW CURRENT PUSH BUTTON		CONNECTION TO STICK	PROTECTION DEGREE		SPECIAL CUSTOM PROJECTS	
1	7	X	X	-	D	H	L	.	C	P	.	X	X

1	7	X	X
---	---	---	---

define the type of handle:

1705 = standard knob
 1710 = anatomic knob
 1715 = rear
 1720 = rear black
 1721 = rear grey
 1725 = ergonomic handle
 1730 = ergonomic XL handle

D

defines the dead man solution:

D = 0 no dead man function
 D = 1 round head push buttons mounted on the sides
 D = 2 round head push button mounted on the rear
 D = 3 flat head push button mounted on the rear
 D = 4 lever dead man
 D = 5 capacitive dead man

H

number of high current push buttons:

H = 0 no high current push button

L

number of low current push buttons:

L = 0 no low current push button

C

defines the connection to the stick (lever):

C = 0 stand alone version, no additional connection element, only the handle
 C = 1 connection to joystick (2800 and 2900)
 C = 2 connection with hole Ø12 and side pin
 C = 3 connection with hole M10

P

defines the protection IP:

P = 0 for internal/cabin use
 P = 1 IP65
 P = 2 IP67

X	X
---	---

numering system from 0 to 99 is used to define special projects, cable length, type of connector, special push buttons and their position, dead man function, etc...

Flexball Italiana S.r.l.

Via San Luigi 13/A - 10043 Orbassano (To) - Italy

Tel 0039.011 90.38.900 - Fax 0039.011 90.38.747

info@flexballitaliana.com

www.flexballitaliana.com

FLEXBALL
ITALIANA

WR CONTROLS GROUP

