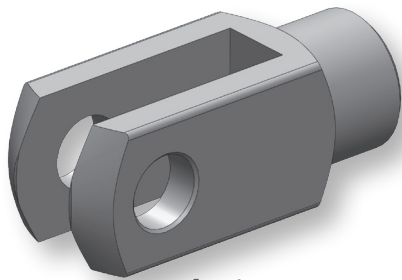


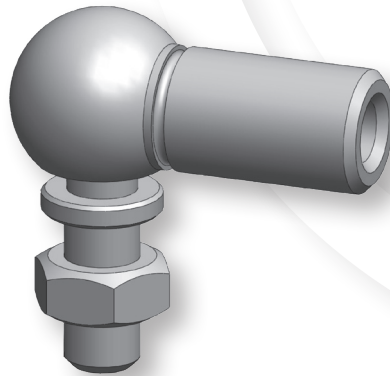
ACCESSORIES

Flexball offers a complete range of accessories that can be mounted either on Flexball cables or on push-pull cables

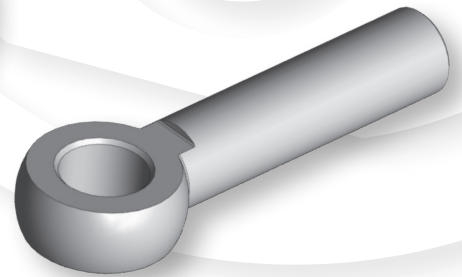
ACCESSORIES FOR RODS



Clevis

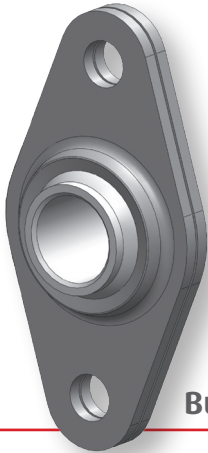


Ball joint

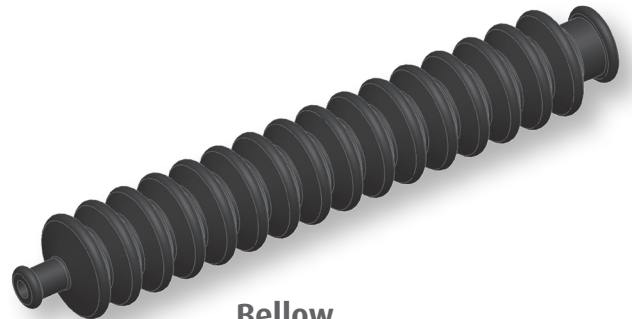


Eyebolt

ACCESSORIES FOR HUBS

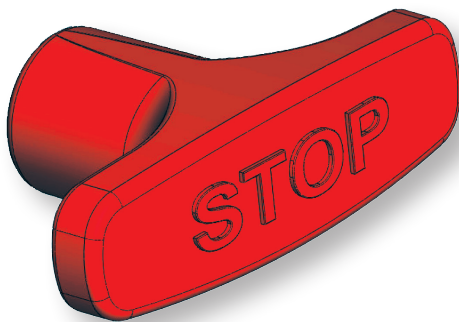


Bulkhead swivel

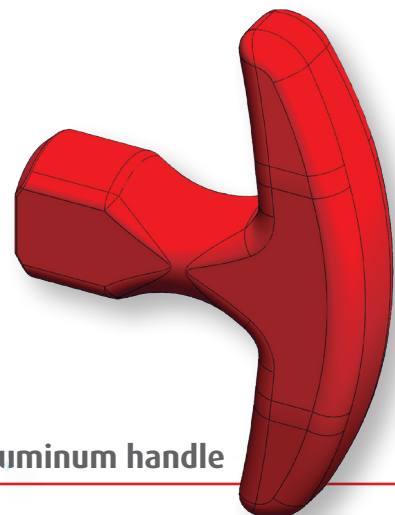


Bellow

HANDLES



T plastic handle

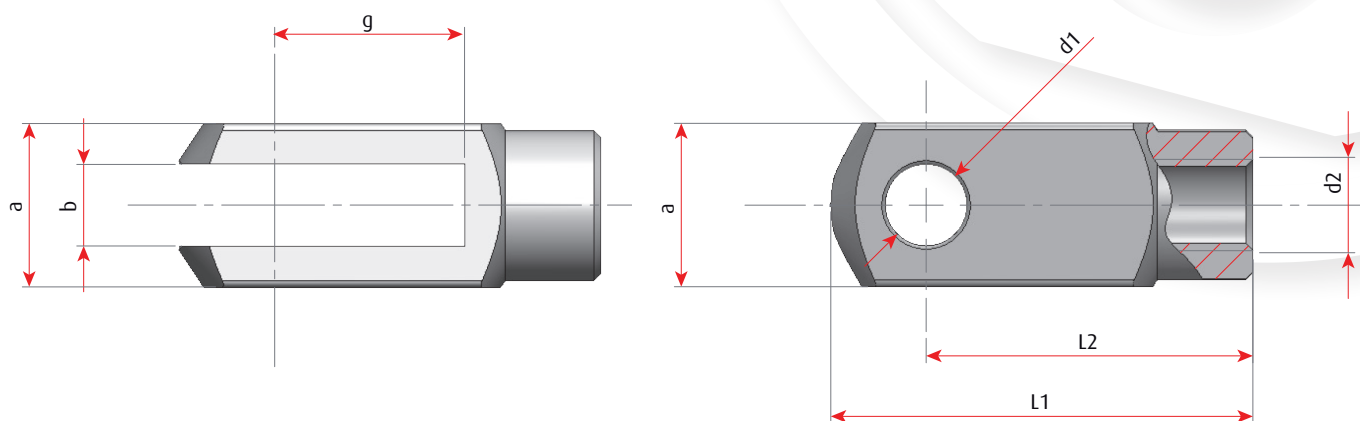
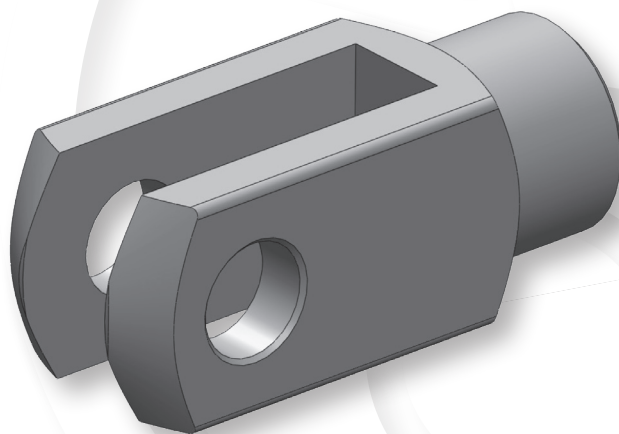


T aluminum handle





To determine the right size of the fork, look at the dimension "M1" on the drawings and tables of Flexball, pull and push-pull cables.



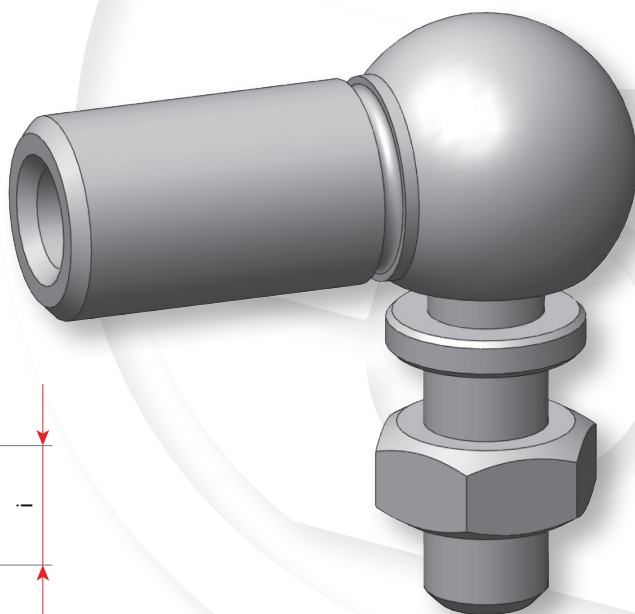
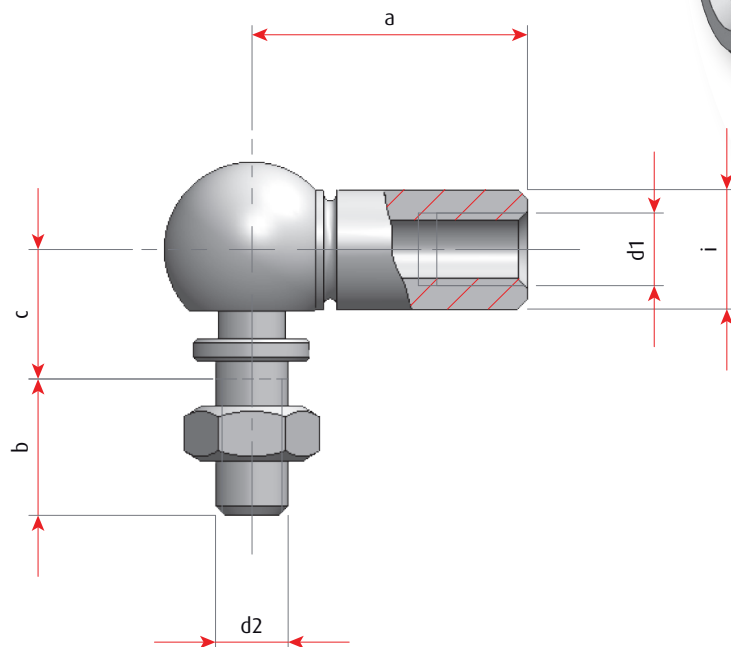
Type	b	d1	d2	g	a	L1	L2	Material	Code
5X10	5	5	M5	10	10	26	20	Zinc plated steel	0-0099.01.00.01
			M6						0-0099.01.00.02
5X20	5	5	M5	20	10	36	30	Zinc plated steel	0-0099.01.00.03
			M6						0-0099.01.00.04
6X12	6	6	M6	12	12	31	24	Zinc plated steel	0-0099.01.00.06
			M7						0-0099.01.00.07
6X24	6	6	M5	24	12	43	36	Zinc plated steel	0-0099.01.00.08
			M6						0-0099.01.00.10
			M7						0-0099.01.00.12
8X16	8	8	M6	16	16	42	32	Zinc plated steel	0-0099.01.00.15
			M7						0-0099.01.00.16
8X32	8	8	M6	32	16	58	48	Zinc plated steel	0-0099.01.00.17
			M7						0-0099.01.00.19
			M8						0-0099.01.00.21
10X20	10	10	M10	20	20	52	40	Zinc plated steel	0-0099.01.00.22
10X40	10	10	M8	40	20	72	60	Zinc plated steel	0-0099.01.00.25
			M10						0-0099.01.00.26

Note:

All the accessories with rod's thread M5 can also be mounted on cables with rod's thread 10/32 UNF.

BALL JOINT

To determine the right size of the ball joint, look at the dimension "M1" on the drawings and tables of Flexball, pull and push-pull cables.

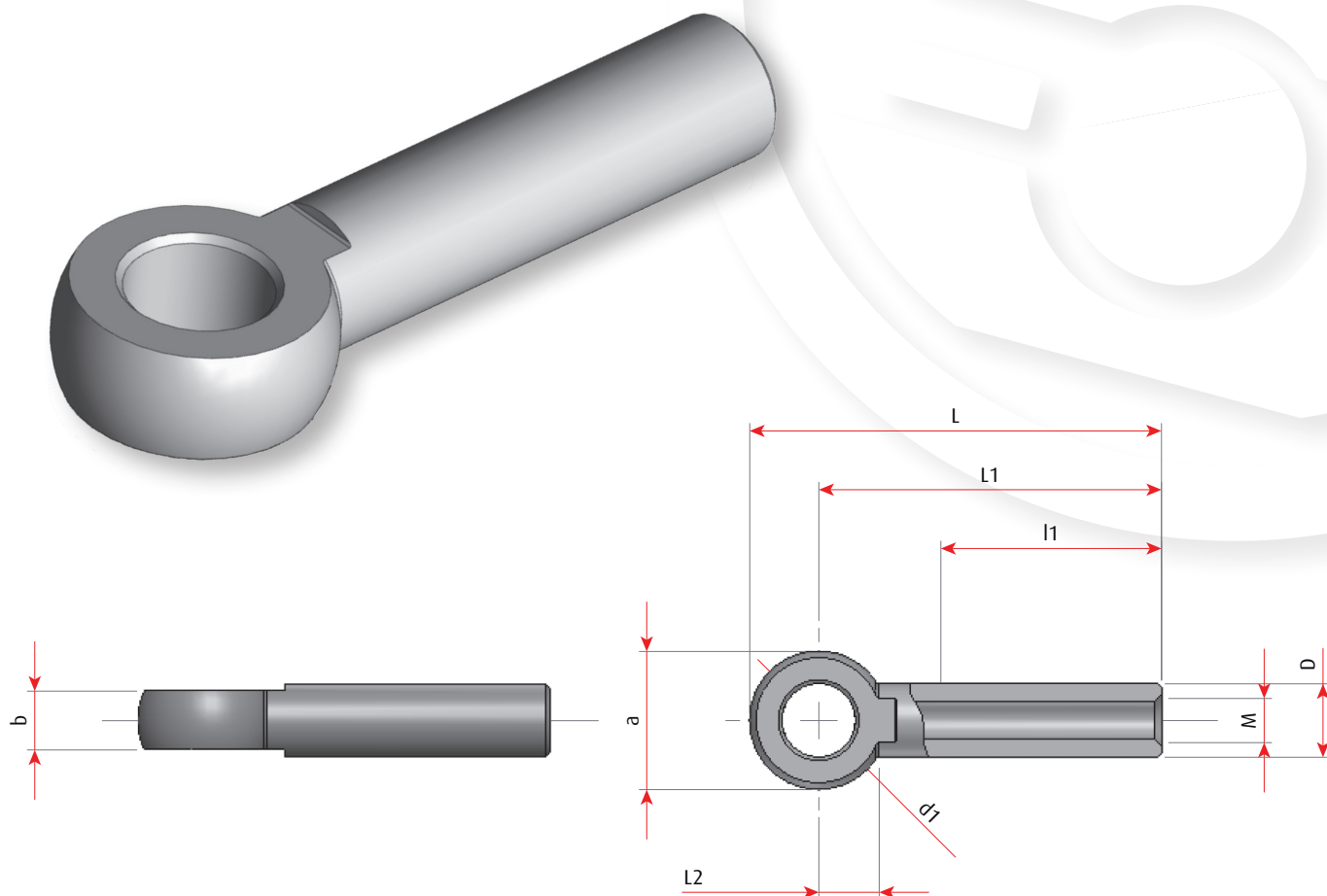


Type	a	i	d1	d2	c	b	Material	Code
AS8	22	10	M5	M5	9	7	Zinc plated steel	D-0099.04.01.00
AS10	25	12	M6	M6	11	8	Zinc plated steel	D-0099.04.03.00
AS13	30	14	M6	M8	13	12	Zinc plated steel	D-0099.04.07.02
	30	14	M7	M7	13	12		D-0099.04.06.00
	30	14	M7	M8	13	12		D-0099.04.07.01
	30	14	M8	M8	13	12		D-0099.04.07.00
AS16	35	16	M10	M10	16	14	Zinc plated steel	D-0099.04.09.00



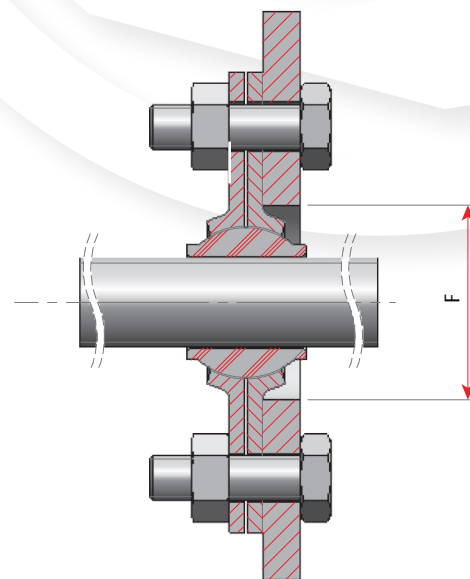
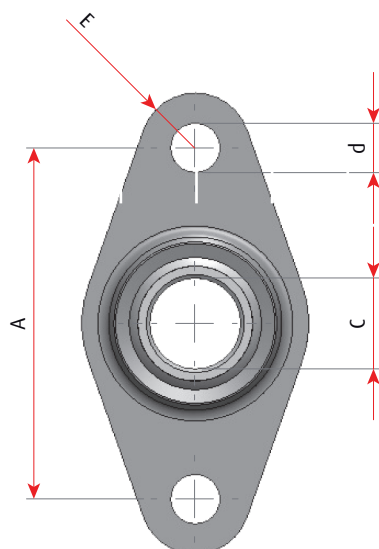
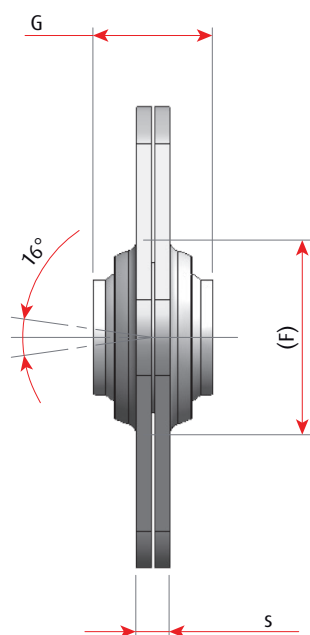
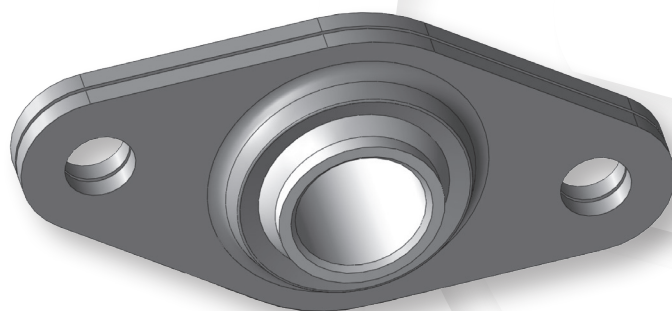
EYEBOLT

To determine the right size of the eyebolt, look at the dimension "M1" on the drawings and tables of Flexball, pull and push-pull cables.



a	b	d1	L	L1	L2	D	M	I1	Material	Code
19	8	8	56	46	9	10	M5x0.8	30	Zinc plated steel	D-0099.06.02.00
							M6x1			D-0099.06.03.00
							M7x1			D-0099.06.04.00
							M8x1.25			D-0099.06.04.02
19	8	10	56	46	9	10	M6x1	30	Zinc plated steel	D-0099.06.03.01
12	6	6	46	40	8	10	M6x1	20	Zinc plated steel	D-0099.06.06.00
							M7x1			D-0099.06.07.00
19	8	10	56	46	9	10	M6x1	30	Zinc plated steel	D-0099.06.04.03
							M7x1			D-0099.06.04.01
							M8x1.25			D-0099.06.04.04
24	12	12	72	60	19	18	M12x1.5	30	Zinc plated steel	D-0099.06.08.00
20	10	10	65	55	16	16	M10x1.5	30	Zinc plated steel	D-0099.06.09.00
30	15	16	70	55	22	24	M12x1.5	30	Zinc plated steel	D-0099.08.02.00

BULKHEAD SWIVEL



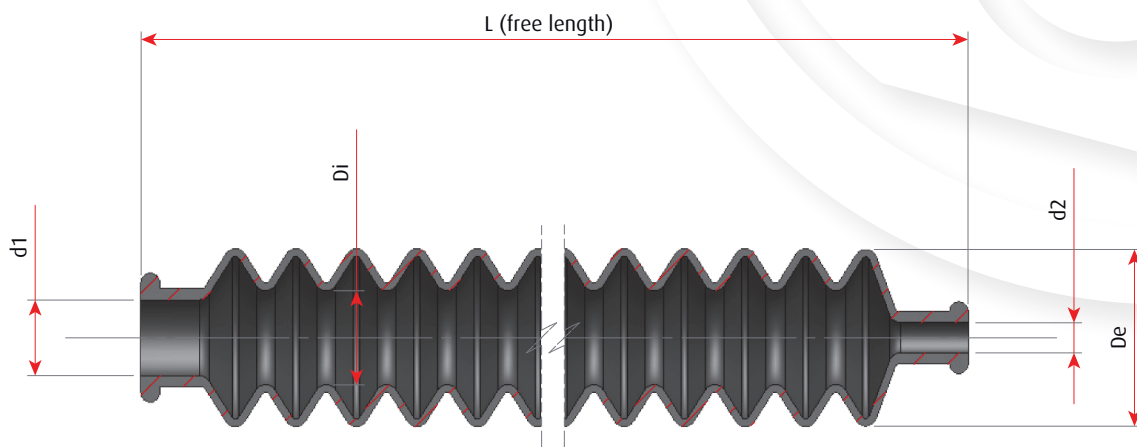
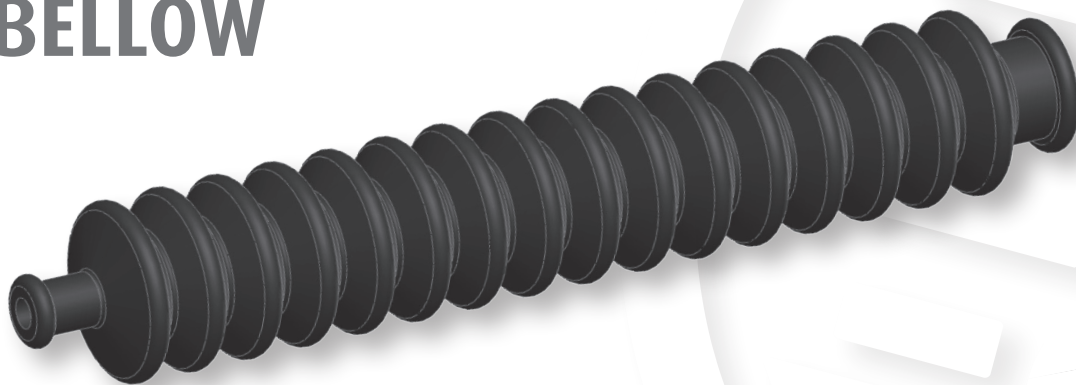
Note:

"F" is the dimension of the hole that has to be drilled on the bracket where the bulkhead swivel will be fixed. The above picture shows the correct mounting of the bulkhead against the bracket.

Type	Application	A	b	C	F	G	s	Ch	Material	Code
55	Flexball 55	30	5.2	10.2	20	12	3	14	Zinc plated steel	0-0099.03.00.01
	V4 F-F shape									
70	Flexball 70	40	6.2	12.2	25	16	4	17	Zinc plated steel	0-0099.03.00.04
	V5 F-F shape									
	07 F-F shape									
	V6 F-F shape									
95	Flexball 95	52	8.2	16.2	34	22	5	25	Zinc plated steel	0-0099.03.00.07
	V8 F-F shape									
125	Flexball 125	56	8.2	18.2	36	25	5	27	Zinc plated steel	0-0099.03.00.09
125 Vofa	Flexball 125	56	8.2	18.2	36	25	14	27	Brass	0-0099.03.00.12
160	Flexball 160	60	10.2	22.2	40	27	16	32	Brass	0-0099.03.00.14



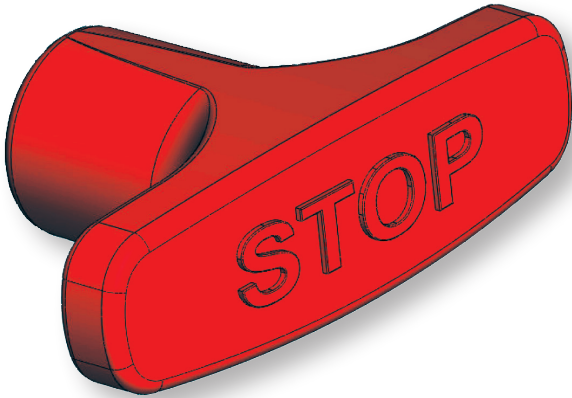
BELLOW



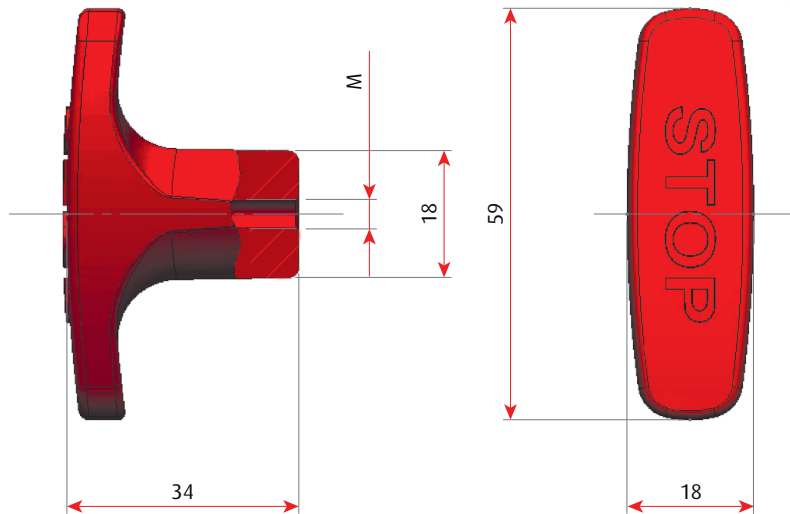
De	Di	d1	d2	L	Number of rings	Material	Collar size	Max stroke	Code
40	21	6	20	108	6	EPDM 20/50	M10x1 M12x1 M16x1.5 M18x1.5 M22x1.5	75	D-0099.05.02.00
40	21	6	20	108	6	MTA80-55I flame resistant			D-0099.05.02.02
40	21	6	20	140	8	EPDM 20/50		100	D-0099.05.03.00
40	22	12	33	152	8	EPDM 20/50	M18x1.5 M22x1.5	100	D-0099.05.03.01
40	22	12	33	152	8	MTA80-55I flame resistant			D-0099.05.06.00
40	21	6	20	140	8	MTA80-55I flame resistant			D-0099.05.08.00
40	22	12	33	215	12	MTA150-50I flame resistant		150	D-0099.05.07.00
45	21	8	25	164	7	PVC	M18x1.5	100	D-0099.05.11.00
22	10	4	7	90	8	EPDM 50/45	A plastic stripe should be used where required	100	D-4413995
25	12	7	10	147	16	EPDM 50/50		100	D-0099.05.10.00
21	12	7.5	6.9	95	17	EPDM 50/50		75	D-0099.05.01.00



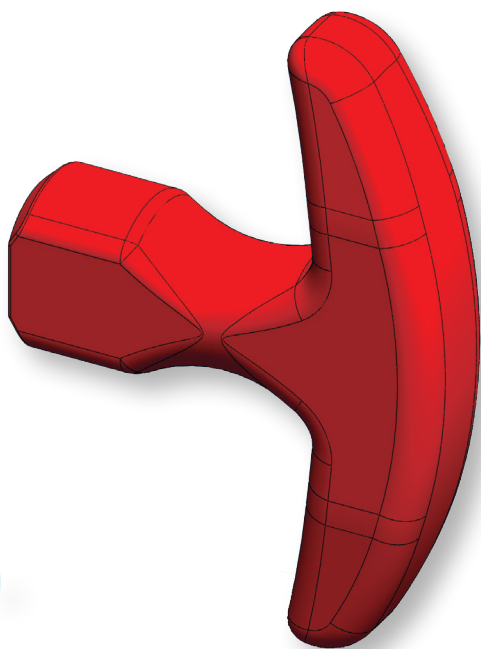
T HANDLE PLASTIC



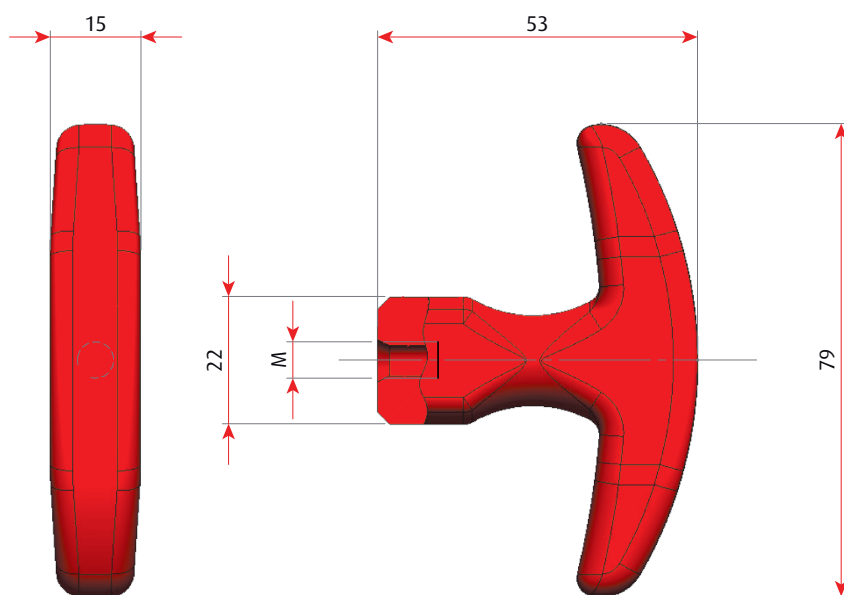
Thread	Handle colour	Code
M5	Red	D-0099.17.01.00
M6		D-0099.17.01.01



T HANDLE ALUMINIUM



Thread	Handle colour	Code
M5	Black	D-0320.03.30.00
	Red	D-0320.03.35.00
M6	Black	D-0320.03.20.00
	Red	D-0320.03.15.00
M7	Black	D-0320.03.45.00
M8	Black	D-0320.03.10.00
	Red	D-0320.03.25.00
	Yellow	D-0320.03.10.01



Flexball Italiana S.r.l.

Via San Luigi 13/A - 10043 Orbassano (To) - Italy

Tel 0039.011 90.38.900 - Fax 0039.011 90.38.747

info@flexballitaliana.com

www.flexballitaliana.com

FLEXBALL
ITALIANA

WR CONTROLS GROUP

